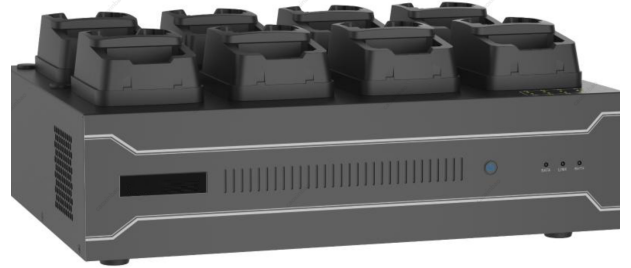


PYMD409 8 Ports Desktop Dock Station



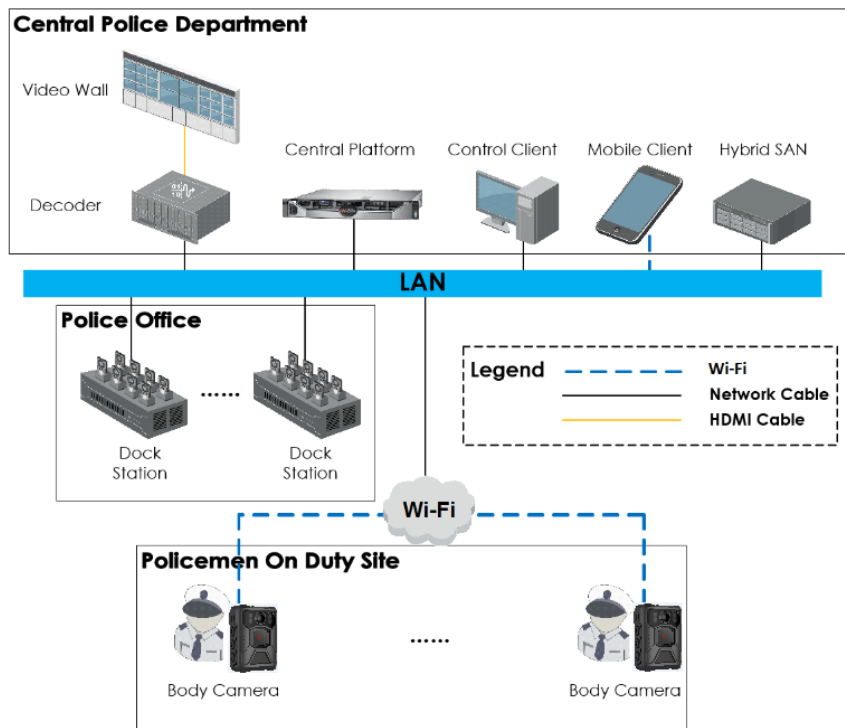
Dock station is designed for collecting data from body cameras. It provides you a simplified way to access and back up data.

- 1000 M dual network interface
- Collects data from multiple body cameras.
- Charges, uploads data, and cleans the storage space automatically.
- Prevents data loss via ANR (Automatic Network Replenishment).
- Cyclic covering: Files will be covered automatically according to the storage timeline when there is no enough space.
- Reads time, date, product No., etc. of the body camera automatically.
- Plays videos, audios, and images.
- Log management.

▪ Specification

Storage	
HDD	Up to 4 disk(s) (Max. 8 TB for each disk) and default 2 TB
RAM	1 GB
Network	
Protocol	HTTPS, FTP, NTP, SADP, ISAPI
Interface	
Indicator	Power indicator,Hard disk indicator,Network indicator,8 indicator(s) for charging/working/recording/exception
Button	Power
General Interface	1 × USB 3.0,2 × USB 2.0,HDMI
Body Camera Access Number	Up to 8 body camera(s)
Base Paramaters	5 VDC, 1.5 A for each channel, rate ≥ 8 MB/s
General	
Operating System	Linux
Power	100 to 240 VAC, max. 250 W
Operating Condition	-10 °C to 55 °C (-14 °F to 131 °F). Humidity 95% or less (non-condensing)
Dimensions	400 mm × 300 mm × 124 mm (15.75" × 11.81" × 4.88")
Weight	7.1 kg (15.65 lb.)
Installation Method	Desk-mounted
Client	HikCentral Pro,HikCentral Master
Web Browser	Plug-in required live view: IE 10+, Plug-in free live view: Chrome 57.0+, Firefox 52.0+
Speaker	1 build-in speaker
Approval	
EMC	CE-EMC: EN 55032: 2015,EN 61000-3-3: 2013,EN 50130-4: 2011 +A1: 2014,EN 61000-3-2: 2014
Safety	CE-LVD: EN 62368-1: 2014/A11: 2017,CB: IEC 62368-1: 2014+A11

▪ Typical Application



▪ Available Model

PYMD409

▪ Dimension

