



## **JOB DESCRIPTION**

**JOB TITLE:** Industrial Design Engineer

**REPORTS TO:** Programme Manager

**DEPARTMENT/LOCATION:** Rotherham sites, with travel to third parties as required

### **MAIN PURPOSE OF THE JOB:**

Create aesthetic and mechanical design solutions for the enclosure of electronic products in the Pyronix product range. Work with internal and external stakeholders to produce concepts and working prototypes using computer aided design and additive manufacturing. Provide engineering support for the management and revision of parts; products; and plastic injection mould tool assets. Provide mechanical engineering support to aid technical issue resolution within the business.

### **KEY RESPONSIBILITIES**

- Aesthetic and mechanical design concept development and prototyping
- Driving innovation from a mechanical design perspective, in terms of materials, aesthetics and design for manufacture and assembly (DFMA)
- Creating and maintaining accurate records for 3D and 2D designs that are part of our product suite
- Improving and maintaining accurate material specifications for mechanical parts and products
- Assisting R&D/Engineering in the design, specification and manufacture of equipment for experimental and test purposes
- Assisting the Compliance team in the execution of experiments in line with standards testing
- Operating and overseeing 3D Printing equipment for R&D/Engineering
- Plastic injection mould tool asset management and reporting
- Work with the Product Director, Head of R&D and the Programme Manager to drive efficient communication, process adherence, and stakeholder engagement

### **KEY SKILLS / EXPERIENCE**

#### **Essential**

- Minimum of HND Level education in Mechanical, Product Design or Industrial Design Engineering
- Computer Aided Design & Manufacturing experience in one or more of the major packages (Solidworks; CATIA; Autodesk)
- Problem solving aptitude
- A self-motivated character with excellent work ethic
- Microsoft Office advanced competence – Word; PowerPoint; Excel required
- Excellent communication skills, ability to build relationships, ability to work as part of a team

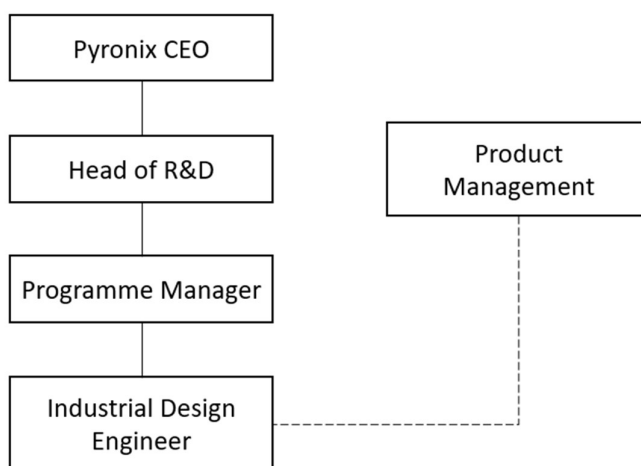




### Desirable / Non-Essential

- Experience working in consumer electronics
- Experience working in new product delivery
- Experience in working in a standards driven industry
- Experience in concept development (both visual and structural)
- Experience working with plastic-injection mould tooling
- Basic knowledge of electronics
- A valid passport and ability to attain working visas in operating regions

### ORGANISATION CHART



### CONTEXT

Since the business was founded in 1986, Pyronix has remained a leader in the UK Intruder and Hold-Up Alarm System (I&HAS) industry. We have a strong team of over 150 employees, with 40 dedicated technical staff in R&D/Engineering. We produce a large suite of electronic products throughout the security space in high volume, in excess of 120,000 units per month.

We are keen to further secure the delivery of our technical development programme by adding a dedicated Industrial Design Engineer to the R&D/Engineering team.

We are looking for an individual who; enjoys a challenge; the opportunity to work with an experienced engineering and product management staff who have led the way in their field; see their own ideas develop quickly from concept to finished product; and seeks personal development via both internal and external opportunities.

We are open to reviewing applications from all levels of experience as long as a majority of the essential requirements are met. Those who are interested in additive manufacturing and design philosophy at a hobbyist or previous academic level would be ideal for this role. In the event applicants have a design portfolio to share, we would be very interested to see their work at interview.





## WORKING PATTERN

- 37.5 hours per week
- Flexible working pattern with core hours of 9am to 3.30pm, Monday to Friday available after following successful probation period
- Onsite presence required daily from the start of the role, hybrid working may be considered following successful probation period

## WORKING RELATIONSHIPS

- Internal within the Company
  - Colleagues (R&D Team Leaders; other Project Managers; and Engineers) – as part of team and advisor
  - Purchasing; Strategic Purchasing; Customer Logistics; and Finance Teams – as part of team and service provider
  - Product Director/Manager – as advisor and service provider
  - System Engineer – as advisor and service provider
  - Programme Manager – As direct report
  - Head of R&D – as advisor and subordinate
- External to the company
  - External Compliance Organisation – as point of contact
  - External Supplier – as point of contact
  - Hikvision (parent company) – as point of contact and service provider

