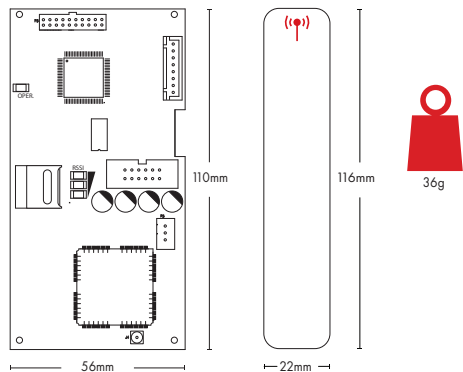


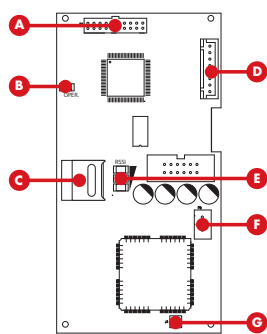
# 4G COMMUNICATIONS MODULE

PARTCODE: DIGI-4G



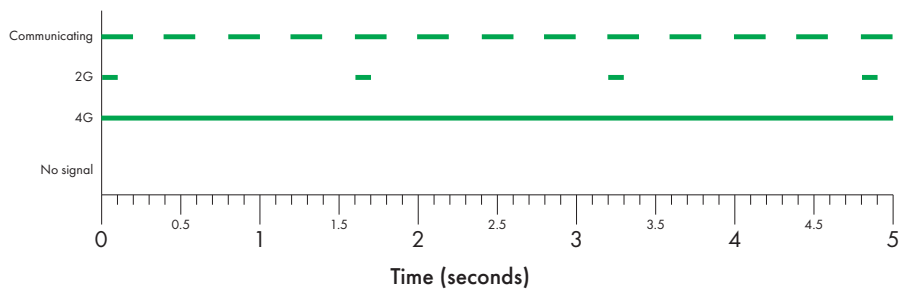
Specification	Value
Dimensions and weight (W x H x D)	56 x 110 x 9mm, 36g
Temperature	Storage: -40°C to 80°C Operating: -10°C to 40°C
Operating voltage	~9-16VDC
Operating current	~40mA @ 12VDC
Operation mode	Pass-through
Signal fault detection time	Minimum = 2 minutes 30 seconds
Standards	EN 61000-6-3:2007 +A1:2011 EN 62368-1:2014 + A11:2017 EN 50136-1: +A2:2018 EN 50136-2:2013 ETSI EN 301 511:V12.5.1 ETSI EN 301 489-1 V2.1.1/-52 V1.1.0 ATIS: SP5
Environmental class	II

# PCB OVERVIEW



- A. Programming port
- B. Operation LED
- C. Micro SIM holder
- D. White loom port
- E. Signal strength LEDs
- F. Power in port
- G. MMCX connection for antenna

## OPERATION LED



Communicating

Rapid Flashing LED.  
Module is currently transferring data to the app, upload/download platform or to an ARC.

2G Signal

Slowly flashing LED.  
Module has 2G signal and is not currently transferring data.

4G Signal

Steady on.  
Module has 4G signal and is not currently transferring data.

No Signal

Off.  
Module has no 2G or 4G data path.

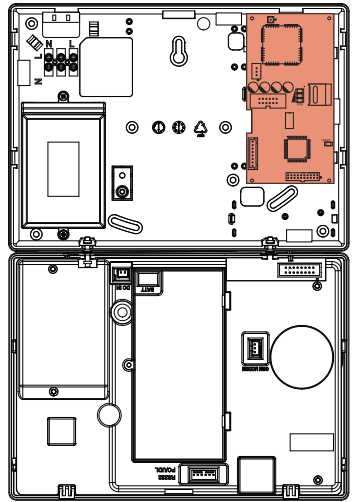
# INSTALLATION

## Enforcer control panel

**Before removing or installing any communication modules, the control panel must be fully powered down.**

If a module is already installed in the back of the Enforcer, remove it first. Then, securely clip the new 4G module into the top right corner of the control panel.

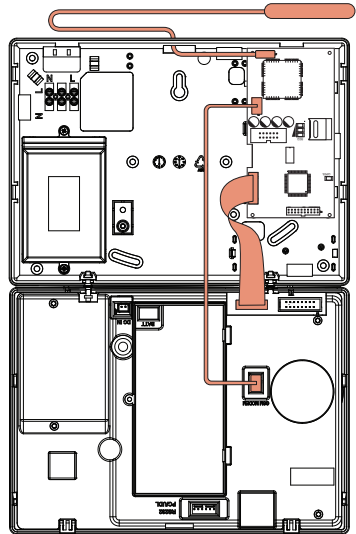
If you have purchased your own SIM card, please insert this into the module.



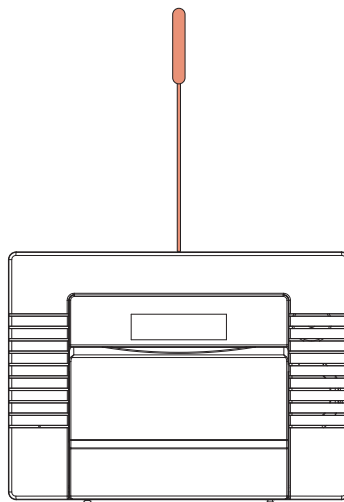
Connect the white loom between the module and the Enforcer.

Then connect the power cable between the module and the Enforcer.

Feed the antenna through the top of the control panel and connect it to the module.



The external antenna needs locating away from the control panel where the best signal is gained.



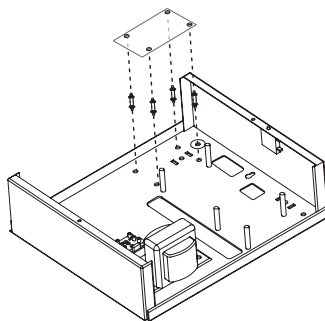
## EURO and PCX

**Before removing or installing any communication modules, the control panel must be fully powered down.**



4x Nylon PCB stand off

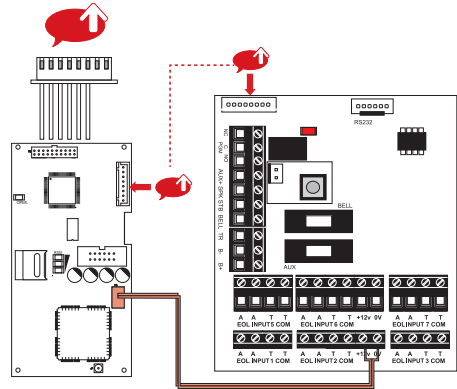
Using the 4 nylon stand offs provided, secure the 4G module in place.



## Connecting to a EURO 46 or 76

Connect the white loom to the left port on the EURO PCB. Make sure the loom only has 6 cores.

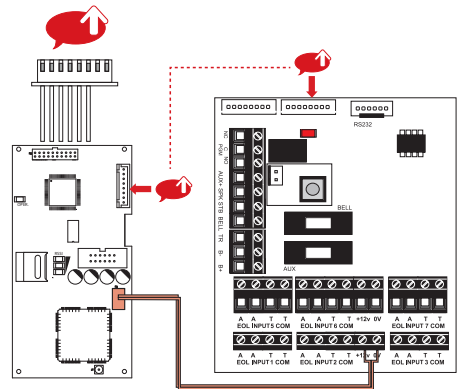
Connect the power the AUX +12VDC power out.



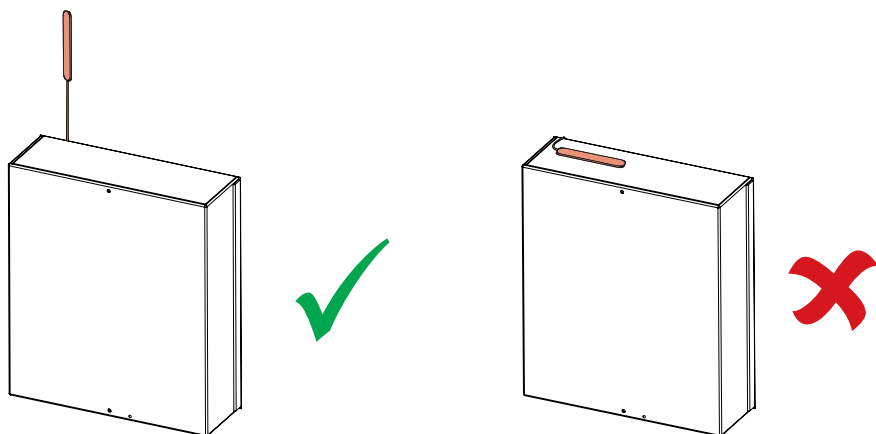
## Connecting to a PCX

Connect the white loom to the right port on the PCX PCB. Make sure the loom only has 6 cores.

Connect the power the AUX +12VDC power out.



Regardless which control panel the 4G module is fitted in, the antenna should be installed away from the end station, at the full extent of its cable, where the signal is strongest.



## PRODUCT INFORMATION

For electrical products sold within the European Community. At the end of the electrical products life, it should not be disposed of with household waste. Please recycle where facilities exist. Check with your Local Authority or retailer for recycling advice in your country.

To prevent possible damage to components, any static charge on your body needs to be eliminated before touching the inside of the unit. This can be accomplished by touching some grounded/earthed metallic conductor such as a radiator/pipework immediately before replacing the batteries.

## WARRANTY

This product is sold subject to our standard warranty conditions and is warranted against defects in workmanship for a period of two years. In the interest of continuing care and design, Pyronix Ltd reserves the right to amend specifications without giving prior notice.